

FREEHOLD



Bungalow - Detached

# BRAMBER CLOSE, THURMASTON, LEICESTER, LE4 8HY

Offers Over

# £325,000

## FEATURES

- Freehold
- Local Amenities Nearby
- Three Bedrooms
- Kitchen
- Driveway for two cars
- No Chain
- Detached Bungalow
- Lounge/Diner
- Garden
- Garage



The logo for SETHS, featuring a stylized red 'S' followed by the word 'SETHS' in black capital letters.

# 3 Bedroom Bungalow - Detached located in Thurmaston

## ENTRANCE HALL

Step into the welcoming entrance of this gorgeous property and be greeted by a cozy front landing, complete with carpeting, radiator, and ample storage space for coats and shoes

## LANDING

Carpeted throughout, as well as a radiator and access to all rooms including an airing cupboard and also a cloakroom additionally there is pull down ladder to access the loft which is partially boarded for ample storage.

## LOUNGE/DINER

18'0" x 16'8"

Enter spacious lounge of this property and feel instantly at home. Featuring a beautiful bay fronted double glazed window that floods the room with natural light, as well as carpeting, a radiator and an additional double glazed window to side aspect

## KITCHEN

11'1" x 9'4"

The kitchen of this property features a stainless steel sink, along with lino flooring and many base and eye-level units with storage. With a condensing unit boiler and space for a gas cooker and washing machine, the kitchen also leads to a uPVC door accessing the garden and a window facing the rear.

## BEDROOM 1

12'6" x 10'11"

The main bedroom of this property features carpeted flooring, a radiator, and a window facing the rear.

## BEDROOM 2

10'2" x 9'1"

This bedroom boasts carpeted flooring, radiator, and a window facing the rear aspect of the property.

## BEDROOM 3

10'0" x 7'1"

Carpeted flooring, radiator, and a window facing front aspect.

## BATHROOM

8'7" x 5'6"

Featuring a panelled bathtub with shower over, a wash hand basin with eye-level unit over, and a toilet. The space is complete with lino flooring, a radiator, and a translucent double glazed window facing the side aspect.

## GARAGE

With up and over door, electric sockets plus lighting.

## OUTSIDE

To the front of the property you will find a gravel driveway with space for two cars, block paved path leading to the front entrance. Property also features low maintenance front garden. At the rear, a block paved path separates the grass area, which features mature fruit trees and a shed. Perfect for outdoor relaxation and entertaining.

## COUNCIL TAX BAND - C

## FREEHOLD



BELGRAVE OFFICE SALES | 20 LOUGHBOROUGH ROAD, LEICESTER, LE4 5LD

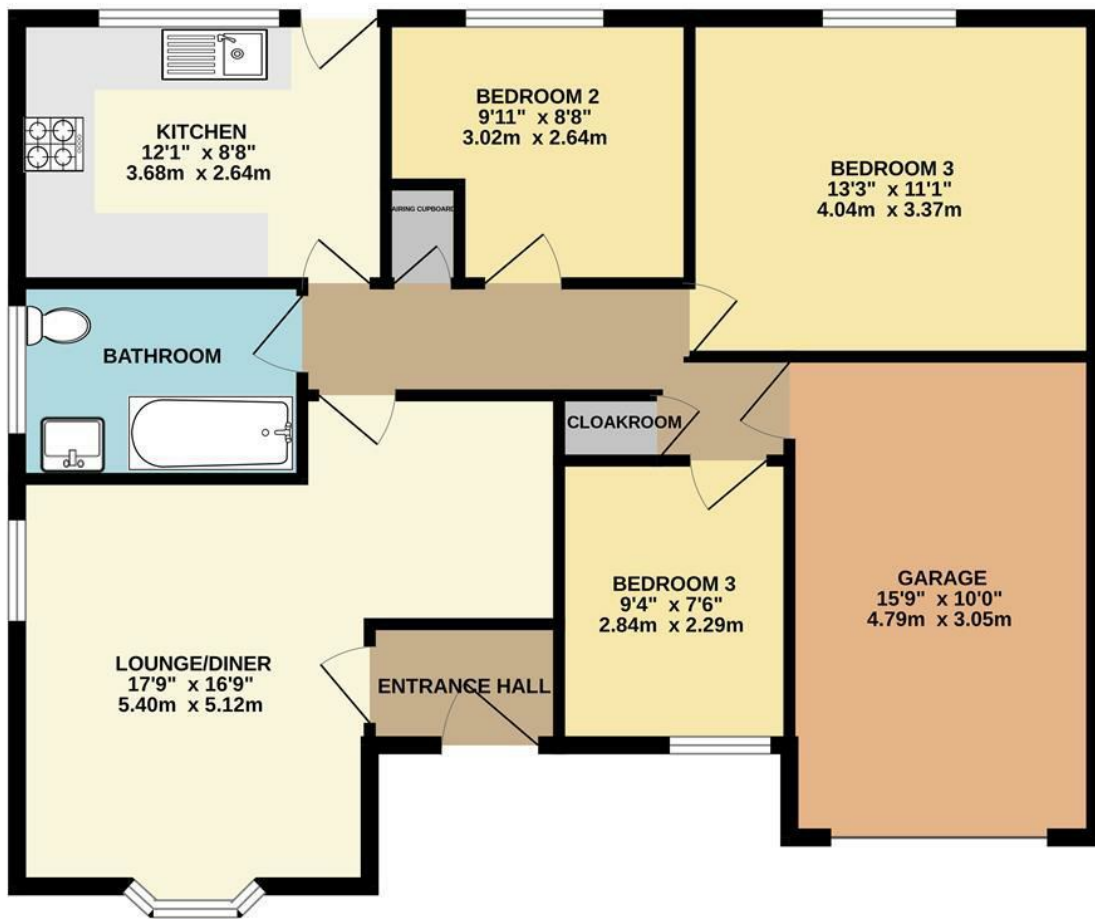


BELGRAVE OFFICE SALES | 20 LOUGHBOROUGH ROAD, LEICESTER, LE4 5LD



BELGRAVE OFFICE SALES | 20 LOUGHBOROUGH ROAD, LEICESTER, LE4 5LD

GROUND FLOOR  
924 sq.ft. (85.8 sq.m.) approx.



TOTAL FLOOR AREA: 924 sq.ft. (85.8 sq.m.) approx.  
Whilst every attempt has been made to ensure the accuracy of the floorplan contained here, measurements of doors, windows, rooms and any other items are approximate and no responsibility is taken for any error, omission or mis-statement. This plan is for illustrative purposes only and should be used as such by any prospective purchaser. The services, systems and appliances shown have not been tested and no guarantee as to their operability or efficiency can be given.  
Made with Metropix ©2023

Call us on

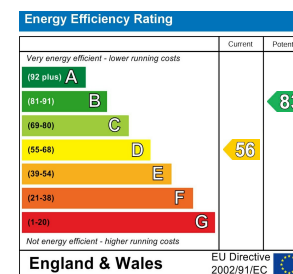
0116 266 9977

sales@seths.co.uk

www.seths.co.uk

Council Tax Band

C



Agents Note: Whilst every care has been taken to prepare these particulars, they are for guidance purposes only. All measurements are approximate and are for general guidance purposes only and whilst every care has been taken to ensure their accuracy, they should not be relied upon and potential buyers are advised to recheck the measurements.

